

FY 2013 MAINTENANCE DREDGING

PROJECT: Mississippi River and Tributaries
 SUB PROJECT: Baton Rouge Harbor- Devil's Swamp
 PROJECT MANAGER: Mike Lowe
 PHONE: (504) 862-1682
 LOCAL SPONSOR: Greater Baton Rouge Port Commission

DESCRIPTION OF WORK:
 Maintain 12' x 200' and 2.5 mile long channel from junction with Mississippi River.

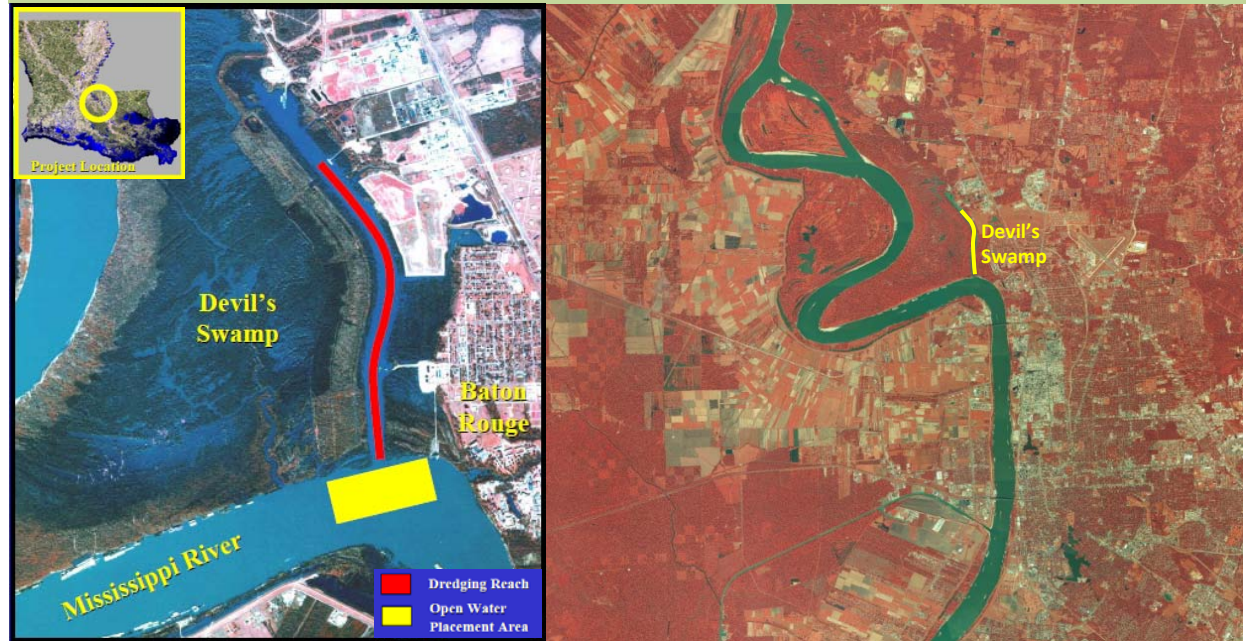
HISTORICAL DREDGING FREQUENCY: Annual
LAST DREDGED: 2011
TYPE OF DREDGE: Cutterhead
ESTIMATED QUANTITY: 100,000 CY
ESTIMATED COST: \$350,000

ADVERTISE: Jan 2013
OPEN BIDS: Dependant on River Conditions
AWARD: TBA
START WORK: TBA
DURATION: Approximately 10 days

DREDGING REACH: Devil's Swamp
DISPOSAL AREA: Mississippi River
DISPOSAL TYPE: Open Water
REMARKS: Dredged material discharged beyond -20 foot contour.

NOTE: We have historically limited maintenance dredging activities to channel dimensions at the intersection of Baton Rouge Harbor and the Mississippi River

MISSISSIPPI RIVER AND TRIBUTARIES BATON ROUGE HARBOR (DEVIL'S SWAMP)



PROJECT AUTHORITY: Authorized by River and Harbor Act of 24 July 1946. Transferred to Flood Control, MR&T, under Flood Control Act of June 1948; Section 12, Public Law 93-251 (WRDA 74), as amended; River & Harbor Act of 23 October 1962 (Public Law 87-874).

NEPA DOCUMENTATION	FONSI	PUBLIC NOTICE	WATER QUALITY CERTIFICATION	
FEIS O&M	16-Apr-76		WQC 920406-07	20-Jul-92
EA #290 Scott's Bluff Erosion Control	21-Apr-99		WQC 000330-07	6-Jun-00
EA #290-A Scott's Bluff Erosion Control	14-Jun-00		WQC 000330-07	6-Jun-00

* revised Water Quality Certificate

Recent Dredging History of Mississippi River and Tributaries – Baton Rouge Harbor (Devil's Swamp)

Fiscal Year	Disposal Area	Dredging Quantity (CY)
2001	Mississippi River Open Water	260,722
2002	Mississippi River Open Water	46,749
2003	NO DREDGING	
2004	Mississippi River Open Water	63,901
2005	NO DREDGING	
2006	Mississippi River Open Water	34,900
2007	Mississippi River Open Water	39,412
2008	Mississippi River Open Water	31,300
2009	NO DREDGING	
2010	Mississippi River Open Water	461,412
2011	Mississippi River Open Water	54,781

